

Crane Attachments

# RT3-ST

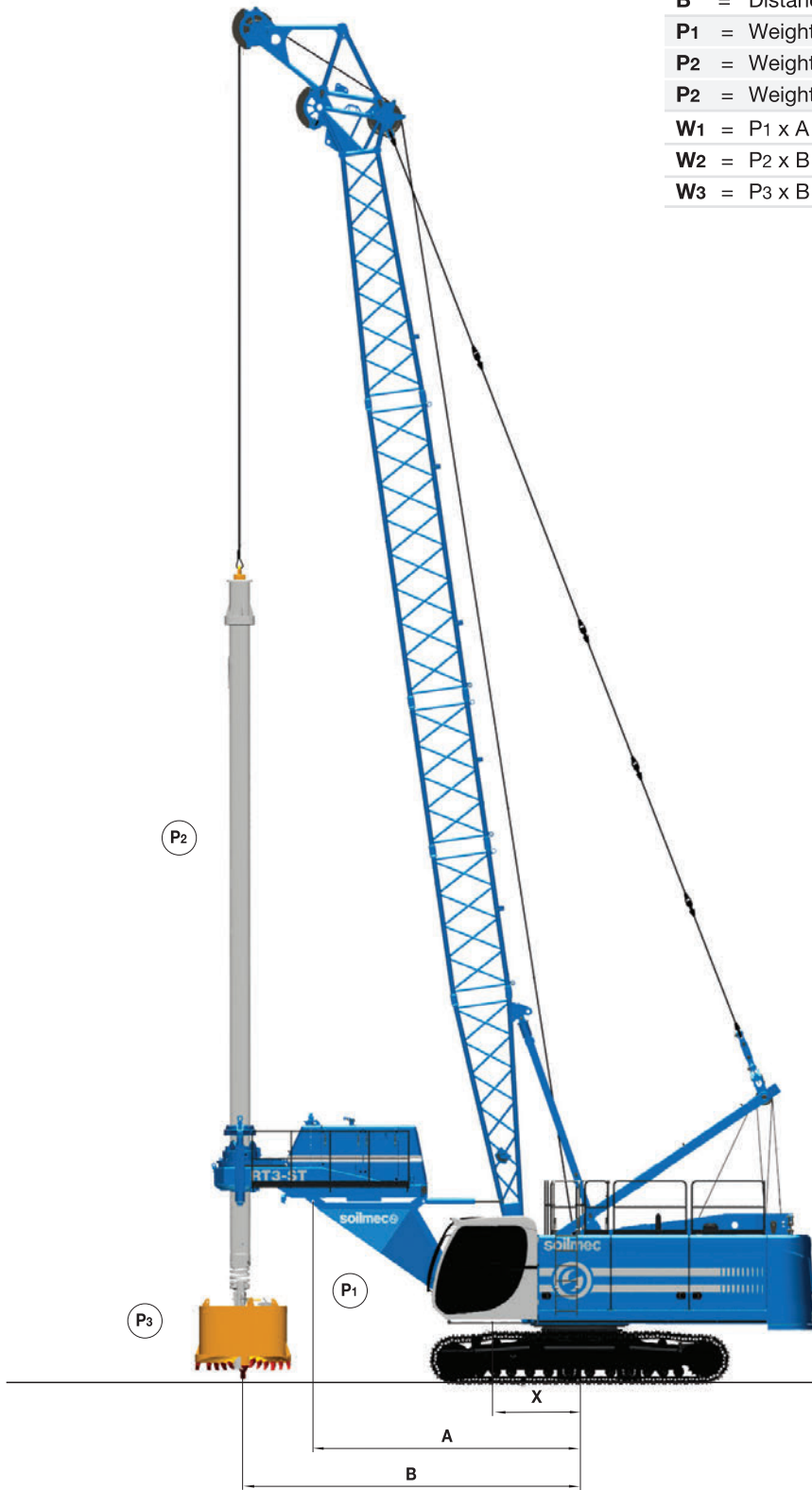


**soilmec**   
Drilling and Foundation Equipment

# RT3-ST Crane Attachments

## APPLICATIONS

Min. Crane Capacity = $(W1+W2+W3)/B$	
<b>X</b>	= Distance between attachment point-crane rotation axis
<b>A</b>	= Distance between rotary rotation axis-crane rotation axis
<b>B</b>	= Distance between kelly rotation axis-crane rotation axis
<b>P1</b>	= Weight of rotary equipment (w/o kelly)
<b>P2</b>	= Weight of telescopic kelly bar
<b>P3</b>	= Weight of tool with material
<b>W1</b>	= $P1 \times A$
<b>W2</b>	= $P2 \times B$
<b>W3</b>	= $P3 \times B$



Minimum characteristics crane required		
Winch pull	98 kN	166889.7 lb
Min lifting capacity	40000 kg	88814 lb
Max boom length	18 m	252.62 ft
Reach (working range)	6,1 m	205 ft

# RT3-ST Crane Attachments

## TECHNICAL DATA SHEET

RT3-ST Crane Attachments		
<b>Drilling Performance</b>		
- Max drilling diameter	<b>3000 mm</b>	<i>118 in</i>
- Max depth with kelly std. 4 x 12	<b>42 m</b>	<i>137.8 ft</i>
- Max depth with special kelly 4 x 32	<b>120 m</b>	<i>393.7 ft</i>
<b>Diesel Engine</b>		
	<b>Cummins 6BTAA 5.9-C</b>	<i>Cummins 6BTAA 5.9-C</i>
- Rated power	<b>128 kW @ 2500 rpm</b>	<i>174 HP @ 2500 rpm</i>
- EU-Directive 97/68/EC Tier 2 USA – EPA Tier 2		
<b>Transmission</b>		
	<b>ZF 4 WG 181</b>	<i>ZF 4 WG 181</i>
- Hydrodynamic torque converter with gearbox and rotation inverter		
<b>Gears</b>		
- Clockwise rotation	<b>3 work</b>	<i>3 work</i>
- Anti-clockwise rotation	<b>4 spin off</b>	<i>4 spin off</i>
- Cooling	<b>oil air heat exchanger</b>	<i>oil air heat exchanger</i>
<b>Rotary</b>		
- Three stage mechanical reduction gear with parallel axes.		
- Oil bath gears & forced lubricating oil circulation system, with filters on intake and delivery line.		
- Max torque (Intermittent)	<b>210 kNm</b>	<i>154885 lbf*ft</i>
- Rated torque	<b>160 kNm</b>	<i>118010 lbf*ft</i>
- Max rotation speed	<b>0 - 160 rpm</b>	<i>0 - 160 rpm</i>
<b>Crowd system</b>		
- 4 hydraulic jacks: 2 horizontal locking jacks, 2 vertical crowd jacks		
- Max crowd force	<b>160 kN</b>	<i>35969 lbf</i>
- Stroke	<b>760 mm</b>	<i>29.9 in</i>
<b>Hydraulic system</b>		
- Flow rates	<b>45 l/m</b>	<i>12 gal/m</i>
- Hydraulic pressure	<b>120 bar</b>	<i>1740 PSI</i>

## STANDARD EQUIPMENT

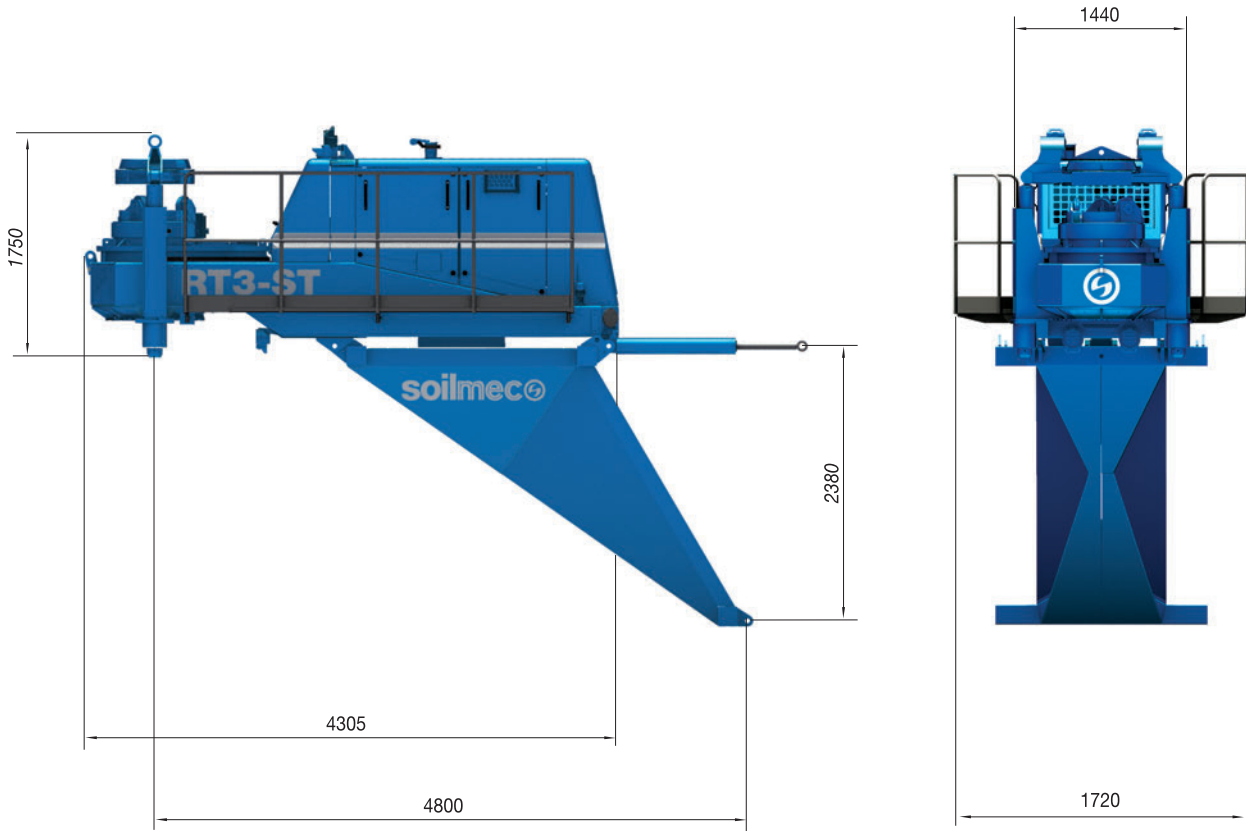
- |   |   |
|---|---|
| <ul style="list-style-type: none"> <li>• Lower frame c/w stabilising jacks</li> <li>• Rotary head lubrication system</li> </ul> | <ul style="list-style-type: none"> <li>• Swivel for main rope</li> <li>• Crowd cylinder system</li> </ul> |
|---|---|

## OPTIONAL EQUIPMENT

- |  |   |
|--|---|
| <ul style="list-style-type: none"> <li>• Sliding intermediate frame</li> <li>• Chassis spacer</li> </ul> | <ul style="list-style-type: none"> <li>• Supersize lower frame (raise the rig up to 9 m)</li> </ul> |
|--|---|

# RT3-ST Crane Attachments

## TRANSPORT, DIMENSIONS AND WEIGHTS



All technical data are purely indicative and subject to change without notice

Technical data sheet RT3ST-002 02/2016

Weights		
- Total weight of the rig	7300 kg	16094 lb
- Upper frame	5600 kg	12346 lb
- Lower frame	1400 kg	3086 lb
- Suspension system	300 kg	661 lb
- Stabilising jacks	50 kg	110 lb
- Service platforms and protection barriers	80 kg	176 lb
- Std. Telescopic kelly with 3 elements	3620 kg	7981 lb
- Std. Telescopic kelly with 4 elements	4550 kg	10031 lb

This brochure has been edited and distributed by SOILMEC Spa. The present document cancels and override any previous ones. This brochure shall not be distributed, reproduced or exhibited without SOILMEC Spa. authorization in accordance with to SOILMEC web site disclaimer condition.

SOILMEC Spa distributes machinery and structures all over the world, supported by SOILMEC Spa subsidiary companies and dealers. The complete Soilmec network list is available on the web site [www.soilmec.it](http://www.soilmec.it)