

Diaphragm Wall Equipment

SC-100

Cougar

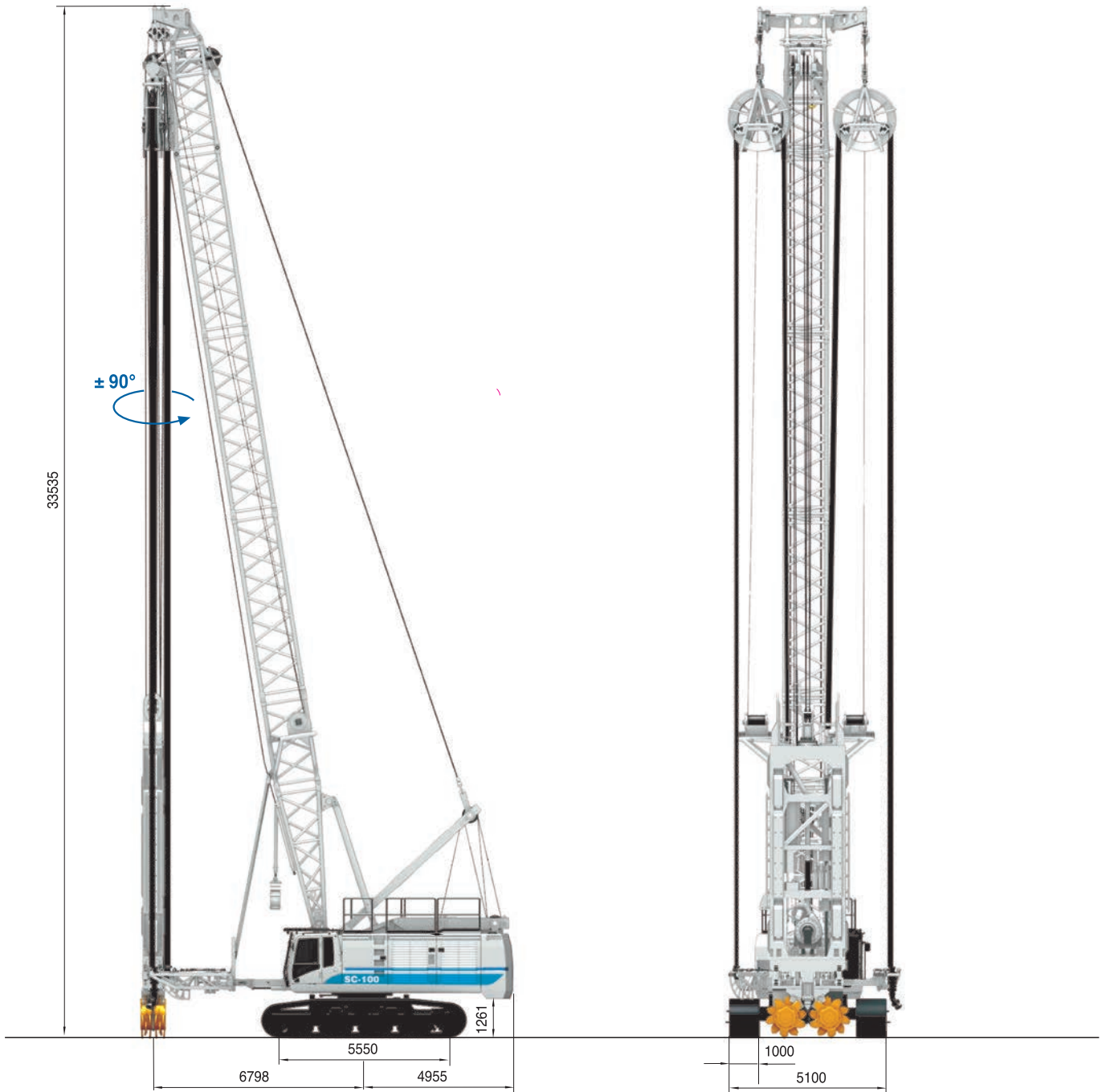
c/w **SH-30**



soilmec 
Drilling and Foundation Equipment

SC-100 Cougar

APPLICATIONS



Hydromill Type	SC-100 Cougar	
Module type	SH-30	SH-30
Max depth	52 m	170.6 ft
Body length	11,3 m	37 ft
Module weight class	30000 kg	66139 lb
Cutting unit	H-7/8/10 - HH-10	H-7/8/10 - HH-10
Trench length range	2600 / 3000 mm	102.4 / 118.1 in
Trench width range	800 / 1200 mm	31.5 / 47 in

Cutting Unit	H-7	H-7	H-8	H-8	H-10	H-10	HH-10	HH-10
Max torque per wheel	73 kNm	53842 lbf*ft	87 kNm	64168 lbf*ft	101 kNm	74494 lbf*ft	101 kNm	74494 lbf*ft
Cutter wheel speed	27 rpm	27 rpm	23 rpm	23 rpm	20 rpm	20 rpm	20 rpm	20 rpm

STANDARD EQUIPMENT

- One 6" mud hose drum on carrier (2 hydraulic hose drum on carrier; separated electric cable winder)
- Independent mobile flaps, 6 upper (3 position) and 6 lower (2 position)
- Electronic System DMS
- Flipper tooth drums
- Simultaneous or independent tilting cutters (opt.)
- Module rotation system for T-panel

SC-100 Cougar

TECHNICAL DATA SHEET

Max height	33,5 m	110 ft
Operating weight c/w module (approx.)	165000 kg	363762 lb
Diesel engine	CUMMINS QSK19	CUMMINS QSK19
- Max Rated Power	563 kW @ 1800 rpm	755 HP @ 1800 rpm
- Engine conforms to exhaust emissions standard	EPA Tier 2 / EU Stage 2	EPA Tier 2 / EU Stage 2
- Displacement	19 l	5.0 US gal
- N. of cylinders and arrangement	6 in line	6 in line
- Aspiration	Turbocharged, air to air	Turbocharged, air to air
- Fuel tank capacity	915 l	242 US gal
- Hydraulic oil tank capacity	990 l	261.5 US gal
Hydraulic system		
- Max working pressure	300 Bar	4351 PSI
- Main pums max oil flow	2x 415 l/min	2x 110 US gal
- Cooling	Oil-to-air heat exchanger	Oil-to-air heat exchanger
Undercarriage	fixed	fixed
- Overall width	5100 mm	200.79 in
- Overall length of crawlers	6684 mm	263.15 in
- Centre idle to center sprocket	5550 mm	218.50 in
- Track shoe width	1000 mm	39.37 in
- Track shoe style	Triple grouser	Triple grouser
- Travel speed	0,85 - 1,70 km/h	0.5 - 1.1 mph

STANDARD EQUIPMENT

BASE MACHINE

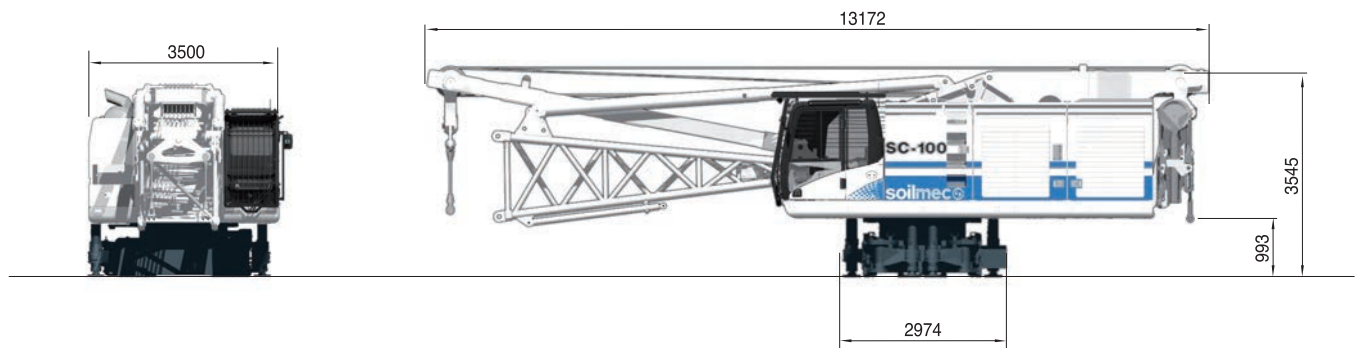
- | | | |
|---|---|--|
| <ul style="list-style-type: none"> • Air conditioner, heater and defroster with automatic climate control • Automatic lubrication system • Automatic swing parking brake and automatic travel parking brake • DMS PC software for production data analysis and report • DMS system for a total control over machine performance and excavation parameters • Drain tank • Filter group for drain lines • Filter group for main oil lines | <ul style="list-style-type: none"> • High capacity batteries for low temperature • High led lighting system • Hydro-clean micro filtration with water separation • In cab warning alarm in case of hydraulic oil contamination • Mud and hydraulic hose assembly • PLC system for electric-hydraulic controls • Radio and CD player • Remote control for changing teeth • Self-removal counterweight • Separated electric cable winder • Service kit (oil pump, impact wrench, washing | <ul style="list-style-type: none"> and greasing kit) • Service winch • Stationary Skylight • Tool kit for equipment maintenance • Two front working lights • Video-cameras and monitor kit • Modem and GPS system |
|---|---|--|

OPTIONAL EQUIPMENT

- | | | |
|--|---|---|
| <ul style="list-style-type: none"> • DMS PC 3D option for panels verticality and overlaps visualization and control | <ul style="list-style-type: none"> • Flat track shoes • Catwalk on the boom | <ul style="list-style-type: none"> • Artic kit for temperature down to -30°C |
|--|---|---|

SC-100 Cougar

TRANSPORT DIMENSIONS AND WEIGHT



Base machine		
Width	3480 mm	137 in
Weight	49000 kg	108027 lb

This brochure has been edited and distributed by SOILMEC Spa. The present document cancels and override any previous ones. This brochure shall not be distributed, reproduced or exhibited without SOILMEC Spa. authorization in accordance with to SOILMEC web site disclaimer condition.

SOILMEC Spa distributes machinery and structures all over the world, supported by SOILMEC Spa subsidiary companies and dealers. The complete Soilmec network list is available on the web site www.soilmec.it